

HIGH PRECISION ER COLLET CHUCK



ER DIN6499(ISO115488)

COLLET

Model	D	D1	L	L1	L2
ER08	8.5	6.5	13.5	1.5	1.2
ER11	11.5	9.5	18	2.5	2
ER16	17	12.8	27.5	4	2.7
ER20	21	17.4	31.5	4.8	2.8
ER25	26	22	34	5	3.1
ER32	33	29.2	40	5.5	3.6
ER40	41	36.2	46	7	4.1

Test conditions		Beat accuracy	
D	L	AA	UP
1.0-1.4	6	0.008	0.005
1.5-2.9	10	0.008	0.005
3.0-5.9	16	0.008	0.005
6.0-9.9	25	0.008	0.005
10.0-17.9	40	0.008	0.005
18.0-26.9	50	0.008	0.005

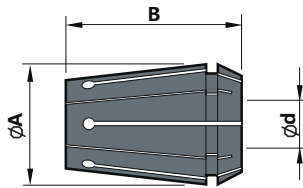
When Ordering Please Indicate The Precision Grade "AA" "UP"

Gauge	AA				UP			
	Clamping Range	Collet Specifications	Spacing Size	Allow the clamping Quantity	Clamping Range	Collet Specifications	Spacing Size	Allow the clamping Quantity
ER08	0.5-5.0	1.0-5.0	0.5	0.5	2.6-5.0	3.0-5.0	1.0	0.4
ER11	0.5-7.0	1.0-7.0	0.5	0.5	2.6-7.0	3.0-7.0	1.0	0.4
ER16	0.5-4.0	1.0-4.0	0.5	0.5	3.6-10.0	4.0-10.0	1.0	0.4
	4.0-10.0	5.0-10.0	1.0	1.0				
ER20	0.5-4.0	1.0-4.0	0.5	0.5	3.6-13.0	4.0-13.0	1.0	0.4
	4.0-13.0	5.0-13.0	1.0	1.0				
ER25	0.5-6.0	1.0-6.0	0.5	0.5	5.6-16.0	6.0-16.0	1.0	0.4
	6.0-16.0	7.0-16.0	1.0	1.0				
ER32	1.6-7.0	2.0-7.0	0.5	0.5	5.6-20.0	6.0-20.0	1.0	0.4
	7.0-20.0	8.0-20.0	1.0	1.0				
ER40	2.6-8.0	3.0-8.0	0.5	0.5				
	8.0-26.0	9.0-26.0	1.0	1.0				

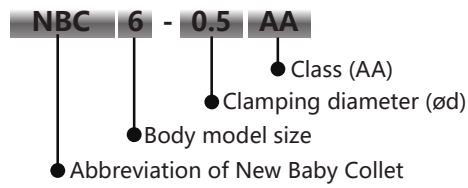
New Baby Collet

Clamping diameter: $\varnothing 0.25 - \varnothing 25.4$

- Within $2\mu\text{m}$ runout accuracy at nose exhibits outstanding performance at ultra high speeds.



• Model Description



• Collet accuracy

Collet class	Runout accuracy	
	Nose	4D
AA	Within $2\mu\text{m}$	Within $4\mu\text{m}$

Gauge	AA	
	Clamping Range	Allow the clamping Quantity
NBC6-0.5 AA	0.25-0.50	0.25
-0.75 AA	0.50-0.75	0.25
-1 AA	0.75-1.00	0.25
-1.25 AA	1.00-1.25	0.25
-1.5 AA	1.25-1.5	0.25
-1.75 AA	1.5-1.75	0.25
-2 AA	1.75-2.00	0.25
-2.25 AA	2.00-2.25	0.25
-2.5 AA	2.25-2.50	0.25
-2.75 AA	2.50-2.75	0.25
-3 AA	2.75-3.00	0.25
-3.175 AA	2.925-3.175	0.25

Gauge	AA	
	Clamping Range	Allow the clamping Quantity
NBC6-3.25 AA	3.00-3.25	0.25
-3.5 AA	3.25-3.5	0.25
-3.75 AA	3.5-3.75	0.25
-4 AA	3.75-4.00	0.25
-4.25 AA	4.00-4.25	0.25
-4.5 AA	4.25-4.50	0.25
-4.75 AA	4.5-4.75	0.25
-5 AA	4.75-5.00	0.25
-5.25 AA	5.00-5.25	0.25
-5.5 AA	5.25-5.50	0.25
-5.75 AA	5.50-5.75	0.25
-6 AA	5.75-6.00	0.25

$\varnothing A = 9.5, B = 14$

Gauge	AA	
	ClampingRange	Allow the clampingQuantity
NBC8-0.75 AA	0.5-0.75	0.25
-1 AA	0.75-1.0	0.25
-1.25 AA	1.0-1.25	0.25
-1.5 AA	1.25-1.5	0.25
-1.75 AA	1.5-1.75	0.25
-2 AA	1.75-2.0	0.25
-2.25 AA	2.0-2.25	0.25
-2.5 AA	2.25-2.5	0.25
-2.75 AA	2.5-2.75	0.25
-3 AA	2.75-3.0	0.25
-3.175 AA	2.675-3.175	0.5
-3.5 AA	3.0-3.5	0.5

Gauge	AA	
	ClampingRange	Allow the clampingQuantity
NBC8-4 AA	3.5-4.0	0.5
-4.5 AA	4.0-4.5	0.5
-5 AA	4.5-5.0	0.5
-5.25 AA	4.75-5.25	0.5
-5.5 AA	5.0-5.5	0.5
-5.75 AA	5.25-5.75	0.5
-6 AA	5.5-6.0	0.5
-6.5 AA	6.0-6.5	0.5
-7 AA	6.5-7.0	0.5
-7.5 AA	7.0-7.5	0.5
-8 AA	7.5-8	0.5

$\varnothing A = 12.5, B = 18$

Gauge	AA	
	ClampingRange	Allow the clampingQuantity
NBC10-1.75 AA	1.5-1.75	0.25
-2 AA	1.75-2.0	0.25
-2.25 AA	2.0-2.25	0.25
-2.5 AA	2.25-2.5	0.25
-2.75 AA	2.5-2.75	0.25
-3 AA	2.75-3.0	0.25
-3.175 AA	2.675-3.175	0.5
-3.25 AA	2.75-3.25	0.5
-3.5 AA	3.0-3.5	0.5
-3.75 AA	3.25-3.75	0.5
-4 AA	3.5-4.0	0.5
-4.25 AA	3.75-4.25	0.5
-4.5 AA	4.0-4.5	0.5
-4.75 AA	4.25-4.75	0.5

Gauge	AA	
	ClampingRange	Allow the clampingQuantity
NBC10-5 AA	4.5-5.0	0.5
-5.25 AA	4.75-5.25	0.5
-5.5 AA	5.0-5.5	0.5
-5.75 AA	5.25-5.75	0.5
-6 AA	5.5-6.0	0.5
-6.5 AA	6.0-6.5	0.5
-7 AA	6.5-7.0	0.5
-7.5 AA	7.0-7.5	0.5
-8 AA	7.5-8.0	0.5
-8.5 AA	8.0-8.5	0.5
-9 AA	8.5-9.0	0.5
-9.5 AA	9.0-9.5	0.5
-10 AA	9.5-10.0	0.5

$\varnothing A = 16.5, B = 27$

Gauge		AA	
		ClampingRange	Allow the clampingQuantity
NBC13-3	AA	2.5-3.0	0.5
-3.175	AA	2.675-3.175	0.5
-3.25	AA	2.75-3.25	0.5
-3.5	AA	3.0-3.5	0.5
-3.75	AA	3.25-3.75	0.5
-4	AA	3.5-4.0	0.5
-4.25	AA	3.75-4.25	0.5
-4.5	AA	4.0-4.5	0.5
-4.75	AA	4.25-4.75	0.5
-5	AA	4.5-5.0	0.5
-5.25	AA	4.75-5.25	0.5
-5.5	AA	5.0-5.5	0.5
-5.75	AA	5.25-5.75	0.5
-6	AA	5.5-6.0	0.5

øA =20.5, B = 31

Gauge		AA	
		ClampingRange	Allow the clampingQuantity
NBC13-6.5	AA	6.0-6.5	0.5
-7	AA	6.5-7.0	0.5
-7.5	AA	7.0-7.5	0.5
-8	AA	7.5-8.0	0.5
-8.5	AA	8.0-8.5	0.5
-9	AA	8.5-9.0	0.5
-9.5	AA	9.0-9.5	0.5
-10	AA	9.5-10	0.5
-10.5	AA	10-10.5	0.5
-11	AA	10.5-11.0	0.5
-11.5	AA	11.0-11.5	0.5
-12	AA	11.5-12.0	0.5
-12.5	AA	12.0-12.5	0.5
-13	AA	12.5-13.0	0.5

Gauge		AA	
		ClampingRange	Allow the clampingQuantity
NBC16-3	AA	2.5-3.0	0.5
-3.25	AA	2.75-3.25	0.5
-3.5	AA	3.0-3.5	0.5
-3.75	AA	3.25-3.75	0.5
-4	AA	3.5-4.0	0.5
-4.25	AA	3.75-4.25	0.5
-4.5	AA	4.0-4.5	0.5
-4.75	AA	4.25-4.75	0.5
-5	AA	4.5-5.0	0.5
-5.25	AA	4.75-5.25	0.5
-5.5	AA	5.0-5.5	0.5
-5.75	AA	5.25-5.75	0.5
-6	AA	5.5-6.0	0.5
-6.5	AA	6.0-6.5	0.5
-7	AA	6.5-7.0	0.5
-7.5	AA	7.0-7.5	0.5
-8	AA	7.5-8.0	0.5

Gauge		AA	
		ClampingRange	Allow the clampingQuantity
NBC16-8.5	AA	8.0-8.5	0.5
-9	AA	8.5-9.0	0.5
-9.5	AA	9.0-9.5	0.5
-10	AA	9.5-10.0	0.5
-10.5	AA	10.0-10.5	0.5
-11	AA	10.5-11.0	0.5
-11.5	AA	11.0-11.5	0.5
-12	AA	11.5-12.0	0.5
-12.5	AA	12.0-12.5	0.5
-13	AA	12.5-13.0	0.5
-13.5	AA	13.0-13.5	0.5
-14	AA	13.5-14.0	0.5
-14.5	AA	14.0-14.5	0.5
-15	AA	14.5-15.0	0.5
-15.5	AA	15.0-15.5	0.5
-16	AA	15.5-16.0	0.5

øA =25.5, B = 35

Gauge		AA	
		ClampingRange	Allow the clampingQuantity
NBC20-3	AA	2.5-3.0	0.5
-3.25	AA	2.75-3.25	0.5
-3.5	AA	3.0-3.5	0.5
-3.75	AA	3.25-3.75	0.5
-4	AA	3.5-4.0	0.5
-4.25	AA	3.75-4.25	0.5
-4.5	AA	4.0-4.5	0.5
-4.75	AA	4.25-4.75	0.5
-5	AA	4.5-5.0	0.5
-5.25	AA	4.75-5.25	0.5
-5.5	AA	5.0-5.5	0.5
-5.75	AA	5.25-5.75	0.5
-6	AA	5.5-6.0	0.5
-6.5	AA	6.0-6.5	0.5
-7	AA	6.5-7.0	0.5
-7.5	AA	7.0-7.5	0.5
-8	AA	7.5-8.0	0.5
-8.5	AA	8.0-8.5	0.5
-9	AA	8.5-9.0	0.5
-9.5	AA	9.0-9.5	0.5
-10	AA	9.5-10.0	0.5

Gauge		AA	
		ClampingRange	Allow the clampingQuantity
NBC20-10.5	AA	10.0-10.5	0.5
-11	AA	10.5-11.0	0.5
-11.5	AA	11.0-11.5	0.5
-12	AA	11.5-12.0	0.5
-12.5	AA	12.0-12.5	0.5
-13	AA	12.5-13.0	0.5
-13.5	AA	13.0-13.5	0.5
-14	AA	13.5-14.0	0.5
-14.5	AA	14.0-14.5	0.5
-15	AA	14.5-15.0	0.5
-15.5	AA	15.0-15.5	0.5
-16	AA	15.5-16.0	0.5
-16.5	AA	16.0-16.5	0.5
-17	AA	16.5-17.0	0.5
-17.5	AA	17.0-17.5	0.5
-18	AA	17.5-18.0	0.5
-18.5	AA	18.0-18.5	0.5
-19	AA	18.5-19.0	0.5
-19.5	AA	19.0-19.5	0.5
-20	AA	19.5-20.0	0.5

øA = 28.5, B = 38

Gauge		AA	
		ClampingRange	Allow the clampingQuantity
NBC25-16	AA	15.5-16.0	0.5
-16.5	AA	16.0-16.5	0.5
-17	AA	16.5-17.0	0.5
-17.5	AA	17-17.5	0.5
-18	AA	17.5-18.0	0.5
-18.5	AA	18.0-18.5	0.5
-19	AA	18.5-19.0	0.5
-19.5	AA	19.0-19.5	0.5
-20	AA	19.5-20	0.5
-20.5	AA	20-20.5	0.5

Gauge		AA	
		ClampingRange	Allow the clampingQuantity
NBC25-21	AA	20.5-21.0	0.5
-21.5	AA	21.0-21.5	0.5
-22	AA	21.5-22.0	0.5
-22.5	AA	22.0-22.5	0.5
-23	AA	22.5-23.0	0.5
-23.5	AA	23.0-23.5	0.5
-24	AA	23.5-24.0	0.5
-24.5	AA	24.0-24.5	0.5
-25	AA	24.5-25.0	0.5
-25.4	AA	24.9-25.4	0.5

øA = 35.5, B = 52

SK COLLET

Model	D	D1	D2	d1	L	L1	L2
SK06	10.5	7.5	9.2	5.8	25	17	4
SK10	15.6	11.8	13	10	30	21.3	5
SK13	20.1	15.5	17	13	39	28	6
SK16	24.5	24.6	21	16	45	32	8
SK25	35.6	35.5	31	25.4	57	43	8.5

Test conditions		Beat accuracy	
D	L	UP	
1.0-1.4	6	0.005	
1.5-2.9	10	0.005	
3.0-5.9	16	0.005	
6.0-9.9	25	0.005	
10.0-17.9	40	0.005	
18.0-26.9	50	0.005	

SK6

Gauge	Clamping Diameter	Clamping range	Allow The Clamping Quantity
SK6-3	3.0	2.75-3.0	0.25
SK6-3.175	3.175	2.925-3.175	0.25
SK6-4	4.0	3.5-4.0	0.5
SK6-5	5.0	4.5-5.0	0.5
SK6-6	6.0	5.5-6.0	0.5

SK10

Gauge	Clamping Diameter	Clamping range	Allow The Clamping Quantity
SK10-3	3.0	2.75-3.0	0.25
SK10-3.175	3.175	2.925-3.175	0.25
SK10-4	4.0	3.5-4.0	0.5
SK10-5	5.0	4.5-5.0	0.5
SK10-6	6.0	5.5-6.0	0.5
SK10-8	8.0	7.5-8.0	0.5
SK10-10	10.0	9.5-10.0	0.5

SK13

Gauge	Clamping Diameter	Clamping range	Allow The Clamping Quantity
SK13-3	3.0	2.75-3.0	0.25
SK13-3.175	3.175	2.925-3.175	0.25
SK13-4	4.0	3.5-4.0	0.5
SK13-5	5.0	4.5-5.0	0.5
SK13-6	6.0	5.5-6.0	0.5
SK13-8	8.0	7.5-8.0	0.5
SK13-10	10.0	9.5-10.0	0.5
SK13-12	12.0	11.5-12.0	0.5

SK16

Gauge	Clamping Diameter	Clamping range	Allow The Clamping Quantity
SK16-4	4.0	3.5-4.0	0.5
SK16-5	5.0	4.5-5.0	0.5
SK16-6	6.0	5.5-6.0	0.5
SK16-8	8.0	7.5-8.0	0.5
SK16-10	10.0	9.5-10.0	0.5
SK16-12	12.0	11.5-12.0	0.5
SK16-14	14.0	13.5-14.0	0.5
SK16-16	16.0	15.5-16.0	0.5

SK20

Gauge	Clamping Diameter	Clamping range	Allow The Clamping Quantity
SK20-6	6.0	5.5-6.0	0.5
SK20-8	8.0	7.5-8.0	0.5
SK20-10	10.0	9.5-10.0	0.5
SK20-12	12.0	11.5-12.0	0.5
SK20-14	14.0	13.5-14.0	0.5
SK20-16	16.0	15.5-16.0	0.5
SK20-18	18.0	17.5-18.0	0.5
SK20-20	20.0	19.5-20.0	0.5

SK25

Gauge	Clamping Diameter	Clamping range	Allow The Clamping Quantity
SK25-6	6.0	5.5-6.0	0.5
SK25-8	8.0	7.5-8.0	0.5
SK25-10	10.0	9.5-10.0	0.5
SK25-12	12.0	11.5-12.0	0.5
SK25-14	14.0	13.5-14.0	0.5
SK25-16	16.0	15.5-16.0	0.5
SK25-20	20.0	19.5-20.0	0.5
SK25-25	25.0	24.5-25.0	0.5

DC COLLET

Model	L	D	d	M
DC4	31	7	5.6	M4
DC6	36	9.6	8.0	M5
DC8	45	15	12.8	M6
DC10	52	19	16	M8
DC12	60	22	19	M10

Test conditions		Beat accuracy	
D	L	UP	
1.0-1.4	6	0.005	
1.5-2.9	10	0.005	
3.0-5.9	16	0.005	
6.0-9.9	25	0.005	
10.0-12	40	0.005	

DC4

Gauge	Clamping Diameter
-------	-------------------

DC4-2	2.0
DC4-3	3.0
DC4-3.175	3.175
DC4-4	4.0

DC6

Gauge	Clamping Diameter
-------	-------------------

DC6-3	3.0
DC6-3.175	3.175
DC6-4	4.0
DC6-5	5.0
DC6-6	6.0

DC8

Gauge	Clamping Diameter
-------	-------------------

DC8-3	3
DC8-4	4
DC8-6	6
DC8-8	8

DC10

Gauge	Clamping Diameter
-------	-------------------

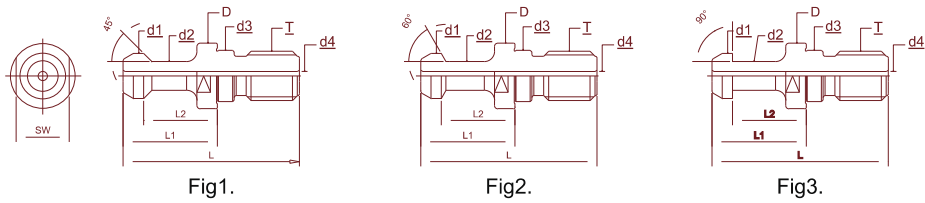
DC10-3	3
DC10-4	4
DC10-6	6
DC10-8	8
DC10-10	10




DC12

Gauge	Clamping Diameter
-------	-------------------

DC12-4	4
DC12-6	6
DC12-8	8
DC12-10	10
DC12-12	12

Drawbar



BT.No	D	d1	d2	d3	d4	L	L1	L2	SW	T-UNG	Fig	Θ	
BT30-45	16.5	11	7	12.5	-	43	23	18	13	M12*1.75P	1	45	
BT30-45-W					3								
BT30-60					-								
BT30-60-W					3						2	60	
BT30-90					-								
BT30-90-W					3								
W is with internal coolant													
BT40-45	23	15	10	17	-	60	35	28	19	M16*2.0P	1	45	
BT40-45-W					4								
BT40-60					-								
BT40-60-W					4						2	60	
BT40-90					-								
BT40-90-W					4								
W is with internal coolant													
BT50-45	38	23	17	25	-	85	45	35	30	M24*3.0P	1	45	
BT50-45-W					5								
BT50-60					-								
BT50-60-W					5						2	60	
BT50-90					-								
BT50-90-W					5								
W is with internal coolant													

BT-MTB

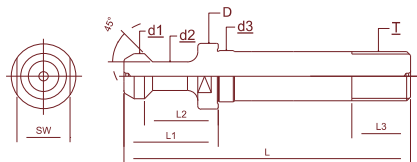



Fig1.

BT. No	D	d1	d2	d3	L3	L	L1	L2	SW	T-UNG	Fig	Θ	
BT30-MTB2	16.5	11	7	12.5	20	-	23	18	13	M10*1.5P	1	45	
BT30-MTB3										M12*1.75P			
BT40-MTB2	23	15	10	17	25	115	35	28	19	M10*1.5P	1	45	
BT40-MTB3										M12*1.75P			
BT40-MTB4										M16*2.0P			
BT50-MTB3										M12*1.75P			
BT50-MTB4	38	23	17	25	40	170	45	35	30	M16*2.0P	1	45	
BT50-MTB5										M20*2.5P			

JIS/JSB/DIN

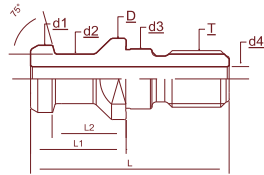


Fig1.

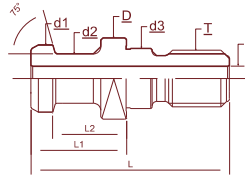


Fig2.

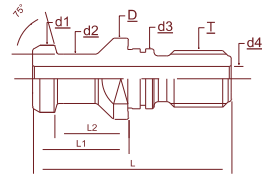


Fig3.

BT. No	D	d1	d2	d3	d4	L	L1	L2	SW	T-UNG	Fig	Ø	
JIS30P	16.5	12	8	12.5	2.5	43.4	23.4	18.4	13	M12*1.75P	1	75	
JSB6339-30											2		
JIS40P	23	19	14	17	7	54	29	23	19	M16*2.0P	1	75	
JSB6339-40											2		
JIS50P	36	28	21	25	11	74	34	25	30	M24*3.0P	1	75	
JSB6339-50											2		
DIN69872-30A	17	13	9	13	2.5	44	24	19	14	M12*1.75P	1	75	
DIN69872-30B											1		
DIN69872-40A	23	19	14	17	7	54	26	20	19	M16*2.0P	1	75	
DIN69872-40B											3		
DIN69872-50A	36	28	21	25	11	74	34	25	30	M16*2.0P	1	75	
DIN69872-50B											3		

ISO7388

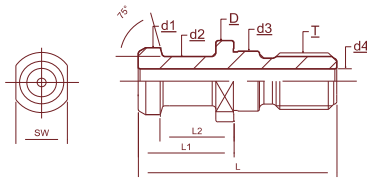


Fig1.

ISO7388. No	D	d1	d2	d3	d4	L	L1	L2	SW	T-UNG	Fig	Ø	
ISO7388/2-30A	17	13	9	13.00	-	44	24	19	14				
ISO7388/2-40A	23	19	14	17.00	7	54	26	20	19				
ISO7388/2-50A	36	28	21	25.00	11	74	34	25	30				

MAZAK

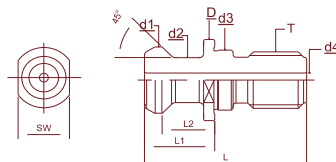


Fig1.

MAZAK. No	D	d1	d2	d3	d4	L	L1	L2	SW	T-UNG	Fig	Ø	
MAZAK-BT40-45	23	18.8	12.45	17.00	6	44.1	19.1	14.03	19	M16*2.0P	1	45	
MAZAK-BT50-45	35.5	28.95	20.83	25.00	11	65.2	25.2	17.58	30	M24*3.0P			

CAT

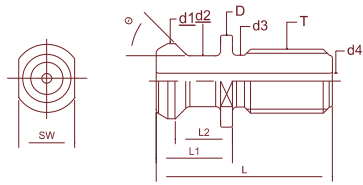


Fig1.

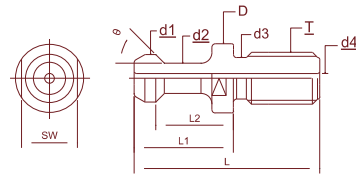


Fig2.

Imperial Dimension Parameters

Cat. No	D	d1	d2	d3	d4	L	L1	L2	SW	T-UNG	Fig	Θ	
CAT30-45-ANSI	0.65	0.52	0.385	0.385	-	1.10	0.46	0.32	0.53	1/2"-12	1	45	
CAT40-45-ANSI	0.94	0.74	0.490	0.490		1.50	0.64	0.44	0.75	5/8"-11			
CAT50-45-ANSI	1.44	1.14	0.820	0.820		2.30	1.00	0.700	1.25	1"-8			
CAT40-45-W	0.94	0.74	0.490	0.490	0.281	1.50	0.64	0.44	0.75	5/8"-11			
CAT50-45-W	1.44	1.14	0.820	0.820	0.468	2.30	1.00	0.700	1.25	1"-8			
CAT40-45-MAS	0.905	0.590	0.394	0.512	-	2.25	1.266	0.99	0.748	5/8"-11	2	45	
CAT40-60-MAS												60	
CAT40-90-MAS												90	
CAT50-45-MAS	1.496	0.906	0.669	0.827	-	1.772	1.378	1.181	1"-8	45			
CAT50-60-MAS										60			
CAT50-90-MAS										90			
CAT40-45	0.905	0.590	0.394	0.512	0.157	2.25	1.266	0.99	0.748	5/8"-11	2	45	
CAT40-60												60	
CAT40-90												90	
CAT50-45	1.496	0.906	0.669	0.827	0.256	1.772	1.378	1.181	1"-8	45			
CAT50-60										60			
CAT50-90										90			
CAT30-45-M	0.65	0.52	0.385	0.385	-	1.10	0.46	0.32	0.53	M12*1.75P	1	45	
CAT40-45-M	0.94	0.74	0.49	0.49	-	1.5	0.64	0.44	0.75	M16*2.0P			
CAT50-45-M	1.44	1.14	0.820	0.820	-	2.30	1.0	0.700	1.25	M24*3.0P			

Metric Size Comparison Parameters

Cat. No	D	d1	d2	d3	d4	L	L1	L2	SW	T-UNG	Fig	Θ	
CAT30-45-ANSI	16.5	13.21	9.78	9.78	-	27.94	11.68	8.13	13.46	1/2"-12	1	45	
CAT40-45-ANSI	23.88	18.8	12.45	12.45		38.1	16.26	11.18	19.05	5/8"-11			
CAT50-45-ANSI	36.58	28.96	20.83	20.83		58.42	25.4	17.78	31.75	1"-8			
CAT40-45-W	23.88	18.8	12.45	12.45	6.35	38.1	16.26	11.18	19.05	5/8"-11			
CAT50-45-W	36.58	28.96	20.83	20.83	12.7	58.42	25.4	17.78	31.75	1"-8			
CAT40-45-MAS	23	15	10	13	-	57	32	25	19	5/8"-11	2	45	
CAT40-60-MAS												60	
CAT40-90-MAS												90	
CAT50-45-MAS	38	23	17	21	-	85	45	35	30	1"-8		45	
CAT50-60-MAS												60	
CAT50-90-MAS											90		
CAT40-45	23	15	10	13	4	57	32	25	19	5/8"-11	2	45	
CAT40-60												60	
CAT40-90												90	
CAT50-45	38	23	17	21	6.5	85	45	35	30	1"-8		45	
CAT50-60												60	
CAT50-90											90		
CAT30-45-M	16.5	13.21	9.78	9.78	-	27.94	11.68	8.13	13.46	M12*1.75P	1	45	
CAT40-45-M	23.88	18.8	12.45	12.45	-	38.1	16.26	11.18	19.05	M16*2.0P			
CAT50-45-M	36.58	28.96	20.83	20.83	-	58.42	25.4	17.78	31.75	M24*3.0P			

High-Speed Engraving and Milling

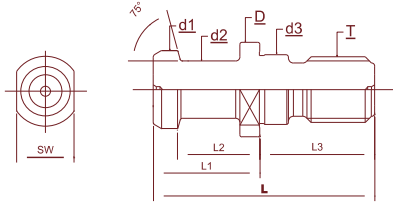


Fig1.

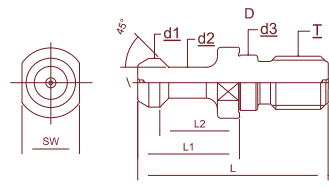


Fig2.

No	D	d1	d2	d3	L3	L	L1	L2	SW	T-UNG	Fig	Ø	
ISO20	11.4	9.0	6.0	8.5	14	26	12	9.0	10	M8*1.25P	1	75	
ISO25	11.9	10.0	7.0	9.0	16	32	16	11.5	10	M8*1.25P	1		
S15T*	10	7.0	5.0	6.5	11	26	15	11.5	8	M6*1.0P	1	75	
S20T*	13	9.5	7.0	8.5	14	34.5	20.5	16	11	M8*1.25P	1		
BT15-45	10	7.0	4.0	6.5	11.5	28.3	16.8	13.5	8	M6*1.0P	2	45	
BT20-45	13	8.5	6.1	9.0	19	37	18	14	11	M8*1.25P	2	45	
ISO10	8.5	6.0	4.0	5.5	9.5	20	11.5	7.5	7	M5*0.8P	1	75	
ISO15	10	7.0	5.0	6.5	11	23	12	8.5	9	M6*1.0P	1	75	

ISO30-R3.0

Woodworking Machinery Specialized

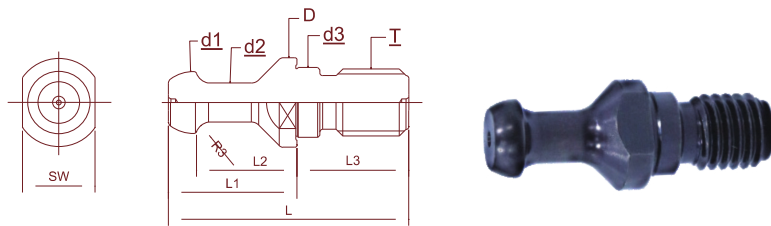
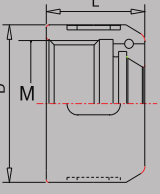



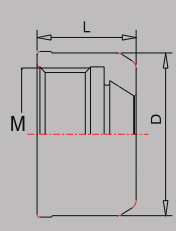
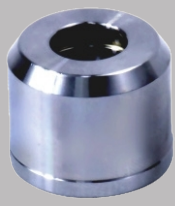
Fig1.

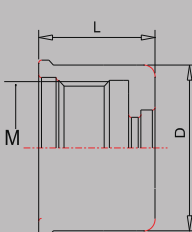
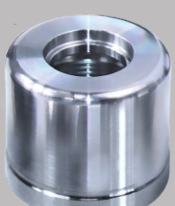
ISO7388. No	D	d1	d2	d3	d4	L	L1	L2	SW	T-UNG	Fig	Ø	
ISO7388/2-30A-RB.07	Ø7	12	8	13.00	-	44	24	19.5	14	M12*1.75P	1		



NUT

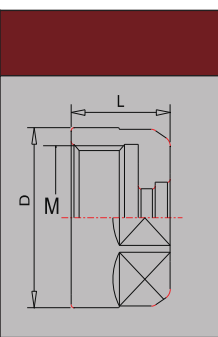

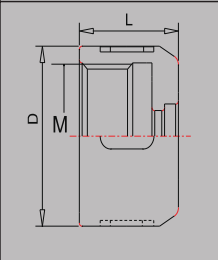

	Model No.	D	L	M			
Standard Nut	ER8A	12	10.8	M10*0.75			ER8A
	ER11A	19	11/13	M14*0.75			ER11A
	ER16A	28	18	M22*1.5			ER16A
	ER20A	34	19.5	M25*1.5			ER20A
	ER25UM	42	20	M32*1.5			ER25UM
	ER32UM	50	23.5	M40*1.5			ER32UM
	ER40UM	63	25.5	M50*1.5			ER40UM
	ER50UM	78	35	M64*2.0			ER50UM
M Type Nut	ER8M	12	10.8	M10*0.75			ER8M
	ER11M	16	12	M13*0.75			ER11M
	ER16M	22	18	M19*1.0			ER16M
	ER20M	28	19	M24*1.0			ER20M
	ER25M	35	20	M30*1.0			ER25M
MS Type Nut	ER11MS	16	12/15	M13*0.75			ER11MS
	ER16MS	22	19	M19*1.0			ER16MS
	ER20MS	28	19.5	M24*1.0			ER20MS
	ER25MS	35	20	M30*1.0			ER25MS

OZ Type Nut	OZ16	43	24	M33*1.5			OZ16
	OZ20	50	28	M42*2.0			OZ20
	OZ25	62	30	M48*2.0			OZ25
	OZ32	72	33.5	M62*2.5			OZ32
	OZ40	85	37	M68*2.5			OZ40

ER High Speed Nut	Model No.	D	L	M		
	GER8	12	10.8	M10*0.75		
	GER11	19.5	13	M14*0.75		
	GER11-mini	16	12	M13*0.75		
	GER16	27.5/30	18	M22*1.5		
	GER16-mini	22	18	M19*1.0		
	GER20	34/35	19	M25*1.5		
	GER20-mini	27.5	19	M24*1.0		
	GER25	40/42	20	M32*1.5		
	GER25-mini	35	20	M30*1.0		
GER32	50	23.5	M40*1.5			

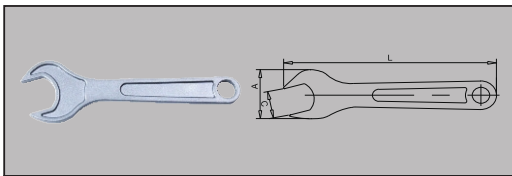
SK High Speed Nut	Model No.	D	L	M		
	GSK6	19.5	21.3	M15.5*1.0		
	GSK10-1	27.5	24	M21.5*1.0		
	GSK10-2	27	24	M21.5*1.0		
	GSK10-3	27.5	24	M22*1.0		
	GSK10-4	27	24	M22*1.0		
	GSK13-1	33	21	M27*1.0		
	GSK13-2	35	21	M28*1.5		
	GSK16	40	31	M32*1.5		
	GSK20	48	*	M40*1.5		
GSK25	55	37	M45*1.5			

	Model No.	D	L	M			
Non-standard Bolts	ER11A	19.5	13	M14*0.75L			ER11A
	ER16A-M19*1	28	18	M19*1.0			ER16A
	ER16A-M19*1	22	18	M19*1.0			*
	ER16A-M24*1	28	18	M24*1.0			ER16A
	ER20A-M24*1	34	19	M24*1.0			ER20A
	ER20A-M26*1.5	34	19	M26*1.5			ER20A
	ER20A-M28*1.5	36	20	M28*1.5			*
	ER32UM-M48*1.5	63	23.5	M48*1.5			ER40UM

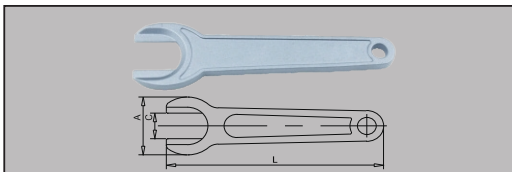
	Model No.	D	L	M			
SK Nut	SK6	19.5	15	M15.5*1.0			SK6
	SK10-1	27.5	17	M21.5*1.0			SK10
	GSK10-2	27.5	17	M22*1.0			SK10
	SK13	34	21	M27*1.0			SK13
	SK16	40	24	M32*1.5			SK16
	SK25	33	21	M45*1.5			SK25

SPANNER

A

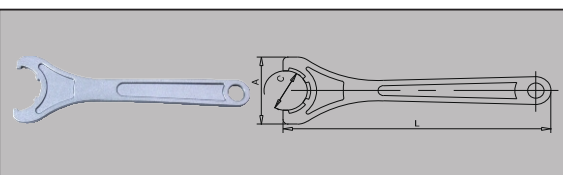


MODEL	A	C	L	Bolts
ER11A	37	17	125	ER11-A
ER16A	50	25	168	ER16-A
ER20A	56	30	182	ER20-A



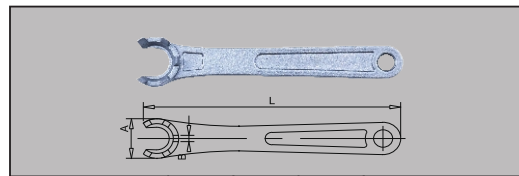
MODEL	A	C	L	Bolts
ER11MS	22	10	100	ER11-MS
ER16MS	34	15	135	ER16-MS
ER20MS	45	18	160	ER20-MS
ER25MS	60	23	180	ER25-MS

UM

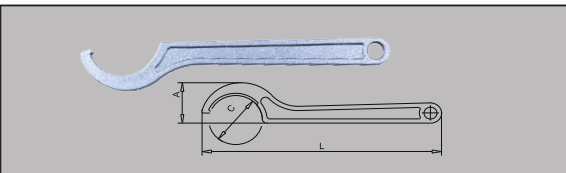


MODEL	A	C	L	Bolts
ER25UM	63	37	210	ER25-UM
ER32UM	73	45	250	ER32-UM
ER40UM	90	58	290	ER40-UM

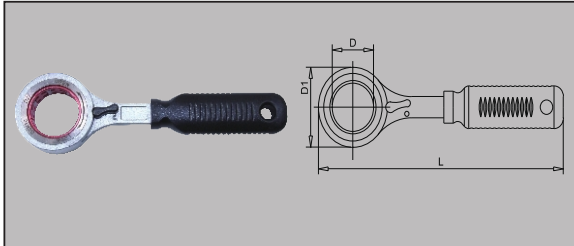
M



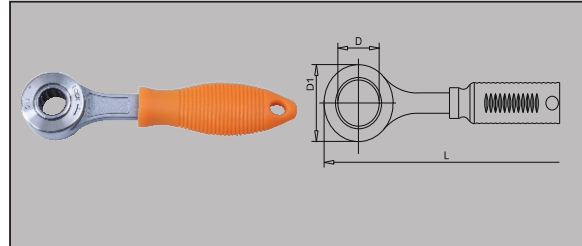
MODEL	A	B	L	Bolts
ER8M	12	2.5	77	ER8M
ER11M	16	2.5	97	ER11M
ER16M	22	4	118	ER16M
ER20M	28	4.5	128	ER20M
ER25M	36	4.5	140	ER25M



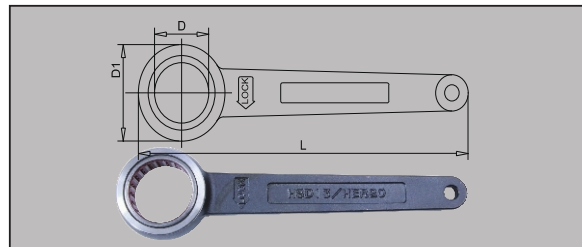
MODEL	A	C	L	Bolts
ER25/SK16	30	38-42	187	ER25/SK16
APU13/ER32	38	48-52	210	APU13/ER32
APU16/SK25	38	54-58	222	APU16/SK25
OZ25/C20/ER40	42	55-63	242	
OZ32/C32	45	68-73	278	OZ32/C32



MODEL	D	D1	L	BOLTS
D16	16	30	140	GER11mini
D19.5	19.5	34	140	GSK06
D22	22	34	140	GER16mini
D27	27	45	160	GSK10
D27.5	27.5	45	160	GSK10/GER16 GER20mini
D30	30	45	160	GER16/GSK10
D32	32	45	160	HER20
D33	33	45	160	GSK13
D34	34	55	185	GER20
D35	35	55	185	GER20/GSK13 GER25mini
D40	40	55	185	GSK16/GER25
D42	42	55	185	GER25/HC16mini
D46	46	67	210	HC16
D48	48	67	210	HC20
D50	50	73	235	GER32/HC20
D55	55	73	235	GSK25
D68	68	89	260	HC32
D70	70	89	260	HC32



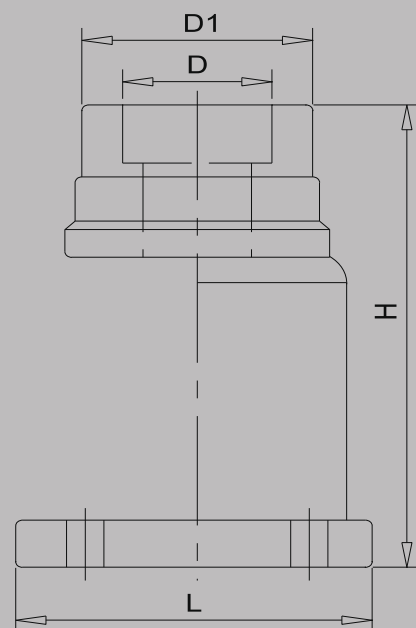
MODEL	D	D1	L	BOLTS
D10	16	30	140	GER06 MEGA3S(BIG)
D12	12	30	140	GER08 MEGA4S(BIG)
D14	14	30	140	MEGA6S(BIG)
D16	16	30	140	GER11mini
D18	18	30	140	MEGA8S(BIG)
D20	20	34	140	MEGA6N(BIG)



MODEL	D	D1	L	BOLTS
D25	25	40	160	MEGA8N(BIG)
D30	30	48	200	GER16/GSK10
D35	35	54	210	GER20/GSK13 GER25mini
D40	40	60	240	GSK16/GER25
D50	50	72	270	GER32/HC20

Holder

MODEL	D	D1	H	L
HSK25	25	D	D	105
HSK32	32	64	165	105
HSK40	40	64	165	105
HSK50	50	D	D	105
HSK63	63	84	170	105
HSK100	100	D	D	105
ISO20	33	D	D	105
ISO25	36	D	D	105
ISO30	50	D	D	105
ISO40	63	D	D	105
ISO50	100	D	D	105
NBT30	46	68	170	105
NBT40	63	84	170	105
NBT50	100	D	D	105





Contattaci per ricevere un preventivo



☎ 011.055.00.39
✉ ordini@ftktools.com

Ufficio commerciale:
Via Torino, 24
10034 Chivasso (To) - Italy

📞 011.055.00.39

🌐 F.T.K. Tools S.r.l.

📷 @ftktools.srl

🌐 www.ftktools.com